



HDH HANOVER &
DISTRICT
HOSPITAL
Hand Hygiene Compliance Rates

Ontario hospitals are posting their hand hygiene compliance rates as percentages for time periods identified by the Ministry of Health and Long-Term Care, using the following formula:

$$\frac{\text{\# of times hand hygiene performed}}{\text{\# of observed hand hygiene indications}}$$

These percentages also reflect:

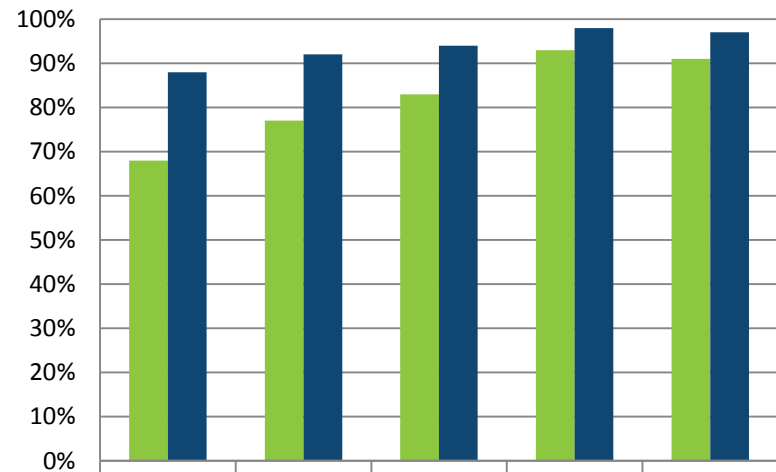
- (i) hand hygiene before initial patient/patient environment contact by combined health care provider type (e.g. nurses, allied health professionals, physicians, etc.)
- (ii) hand hygiene after patient/patient environment contact by combined health care provider type (e.g. nurses, allied health professionals, physicians, etc.)

The goal of public reporting hand hygiene compliance is to achieve an overall assessment of whether compliance rates are improving. It is normal for rates to vary from hospital to hospital.

Hand Hygiene Compliance

Year	BEFORE initial patient/patient environment contact	AFTER patient/patient environment contact
2011	68%	88%
2012	77%	92%
2013	83%	94%
2014	93%	98%
2015	91%	97%
2016		
2017		
2018		

Hand Hygiene (% Compliance) Before and After



■ BEFORE initial patient/patient environment contact	68%	77%	83%	93%	91%
■ AFTER patient/patient environment contact	88%	92%	94%	98%	97%